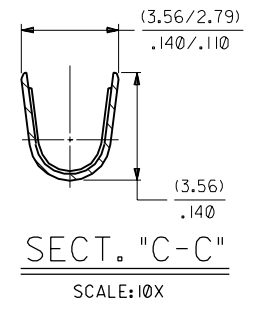
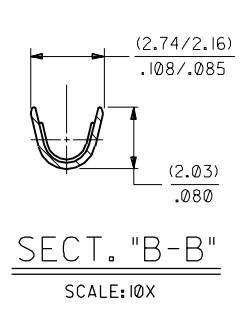
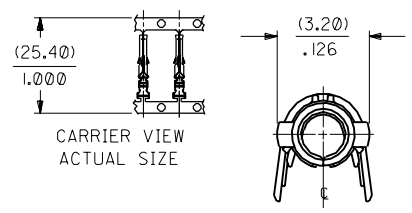


PART NO.	ENG. NO.	
02-06-1201	1787-(P90)I	
02-06-1202	1787-(P90)IL	
02-06-5205	1787-(P59)I	
02-06-5206	1787-(P59)IL	OBSOLETE
02-06-5201	1787-(P550)	
02-06-5202	1787-(P550)L	OBSOLETE



LEGEND

1787-(****)*

P=PREPLATE
BLANK=POSTPLATE
FINISH CODE

FORM
BLANK=CHAIN
L=LOOSE

NOTES:

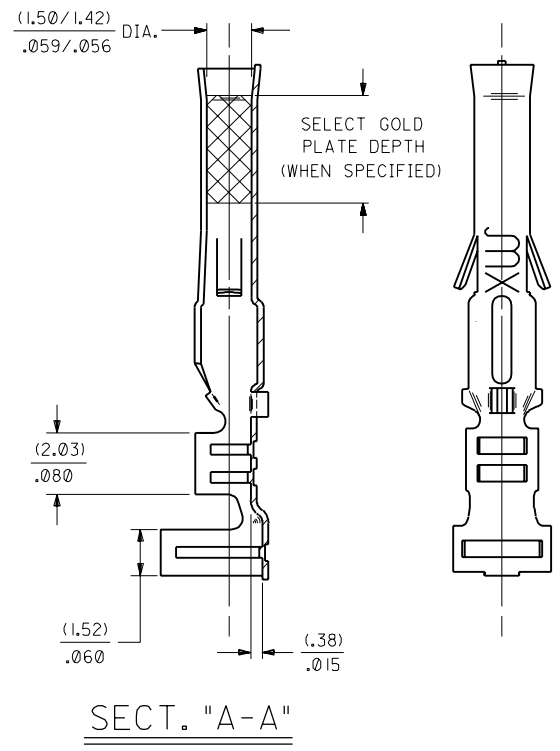
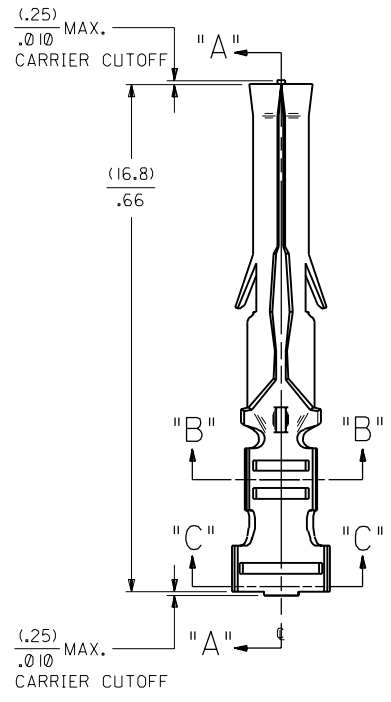
- TERMINAL FOR USE WITH (1.57)/.062 DIA. SERIES HOUSINGS AND WILL ACCEPT 18 THRU 24 AWG WIRE WITH (1.52/3.05)/.060/.120 INSULATION DIA.
- THIS PART CONFORMS TO PRODUCT SPEC. 02-06.

FINISH CODES:

901 HOT TIN DIP (.00051)/.000020 MIN.

591 SELECT GOLD PLATE (.00127)/.000050 MIN. IN CONTACT AREA, OVER (.00127)/.000050 MIN. NICKEL OVERALL WITH (.00025)/.000010 MAX. GOLD FLASH OVERALL.

550 SELECT GOLD PLATE (.00038)/.000015 MIN. IN CONTACT AREA, OVER (.00076)/.000030 MIN. NICKEL OVERALL WITH (.00025)/.000010 MAX. GOLD FLASH OVERALL.



MATERIAL NOTE:

PHOSPHOR BRONZE, ALLOY *C51000,
(.20)/.008 THICK, SPING TEMPER.

DIMENSIONS SHOWN (METRIC) INCH UNLESS OTHERWISE SPECIFIED TOLERANCES: ANGULAR ± 1/2°		▽ = 0 ▼ = 0 REVISE ONLY ON CAD SYSTEM	
INCH METRIC		TITLE CRIMP TERMINAL, FEMALE (1.57)/.062 DIA., PHOS. BRONZE FOR 18 THRU 24 GA. WIRE	
3 PLACE ± .010	---	SHEET NO. DATE 1 OF 1 9/17/87	
2 PLACE ± .014	± 0.25	MOLEX INCORPORATED L15LE, ILL. U.S.A.	
1 PLACE ---	± 0.35	PART NO. DRWG. NO. SD-1787-*	
DRAFT WHERE APPLICABLE MUST REMAIN WITHIN DIMENSIONS		DRAWN BY: SD FILE NAME: SD1787X1 APP'D. BY: RAS SCALE: 8 : 1	
DRWG. BY: CEP CHK'D. BY: RW		THIS DRAWING CONTAINS INFORMATION THAT IS PROPRIETARY TO MOLEX INC. AND SHOULD NOT BE USED WITHOUT WRITTEN PERMISSION.	

AN	OBSOLETE P/N UCR2002-0270 COMERCI 01/9/27
AMI	OBSOLETE -IP550I & -IP550IL ECR U6 0358 CXC 9/15/95 RW
AM	REV. AND REDRAWN FER ECR 10312 GEP 6-17-87 RW