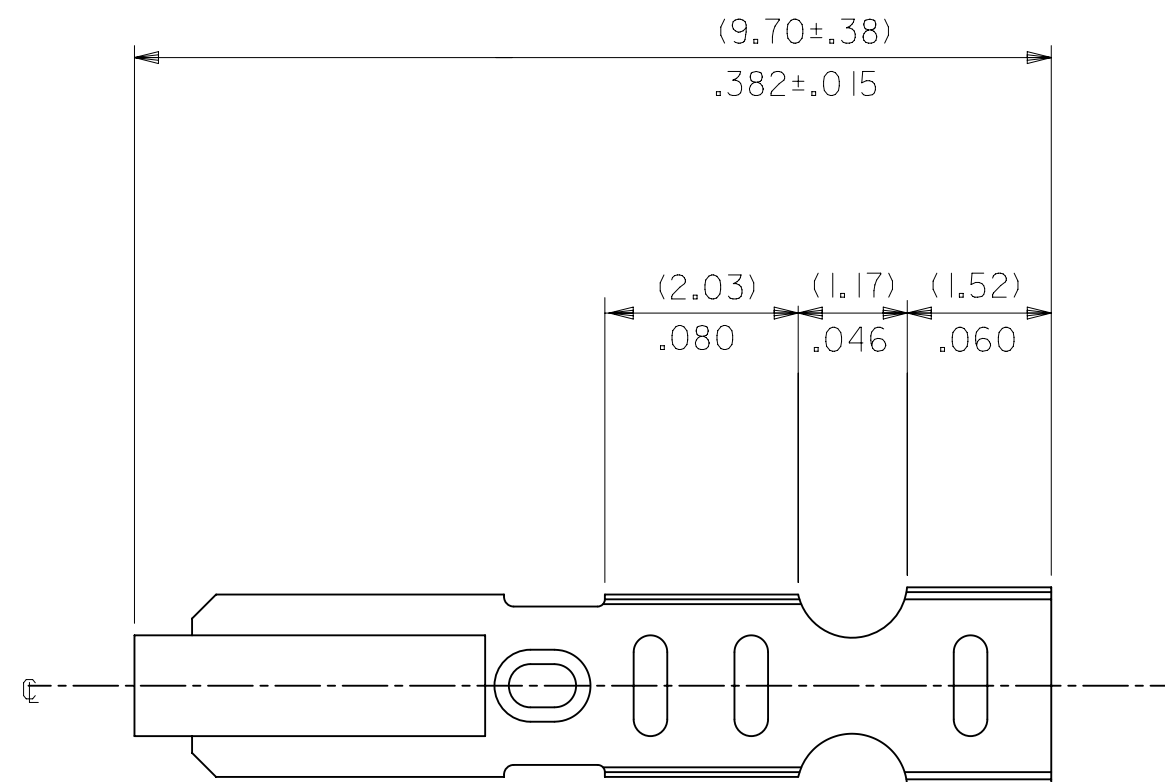
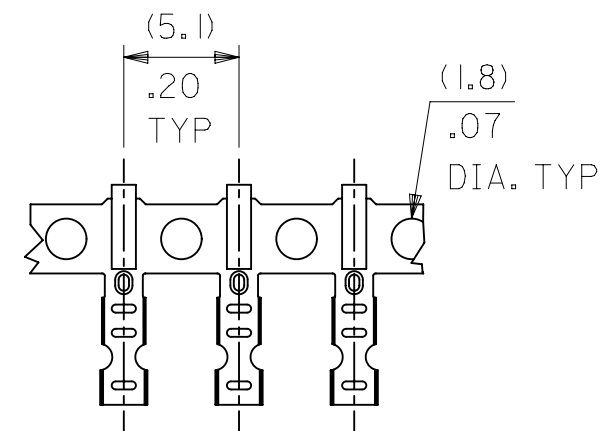


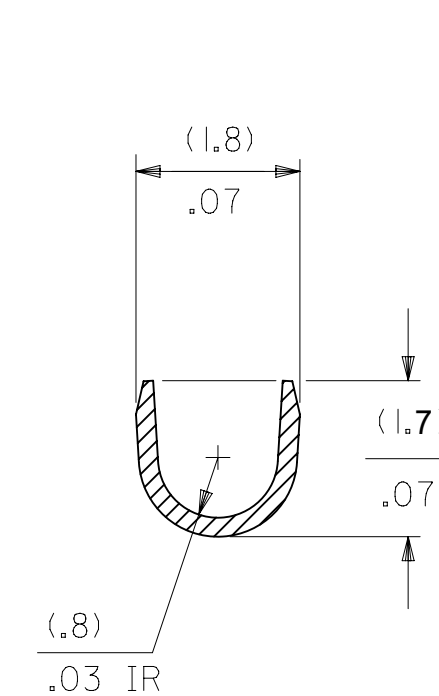
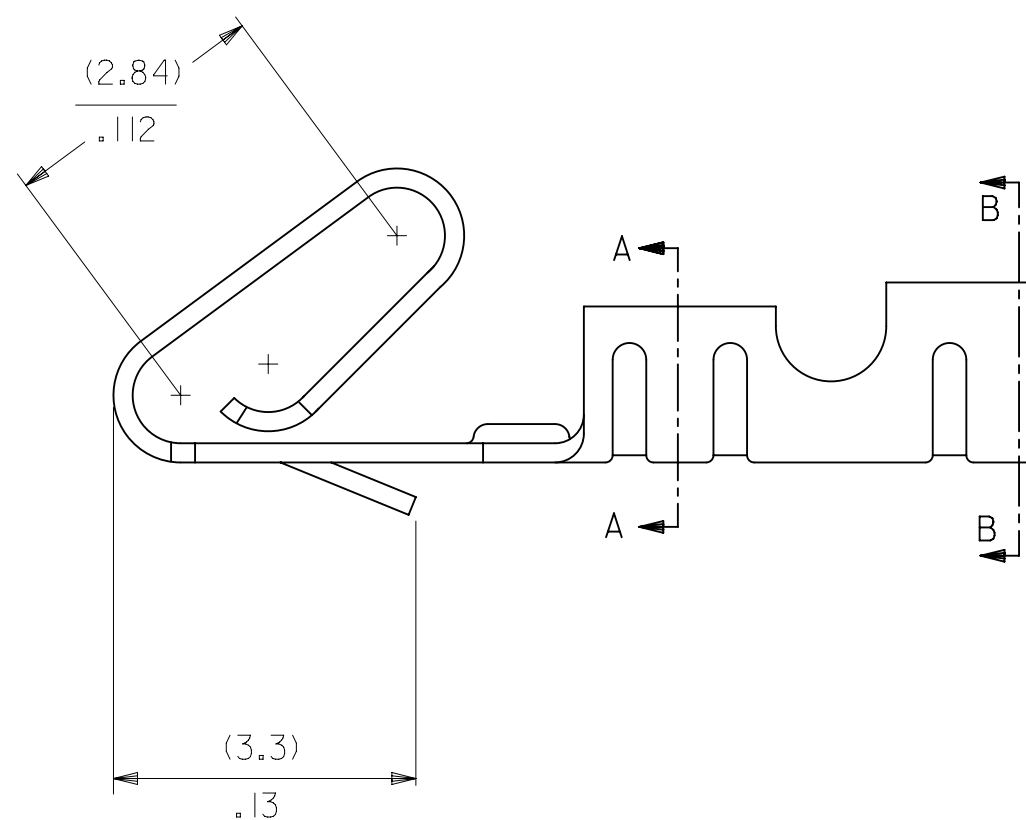
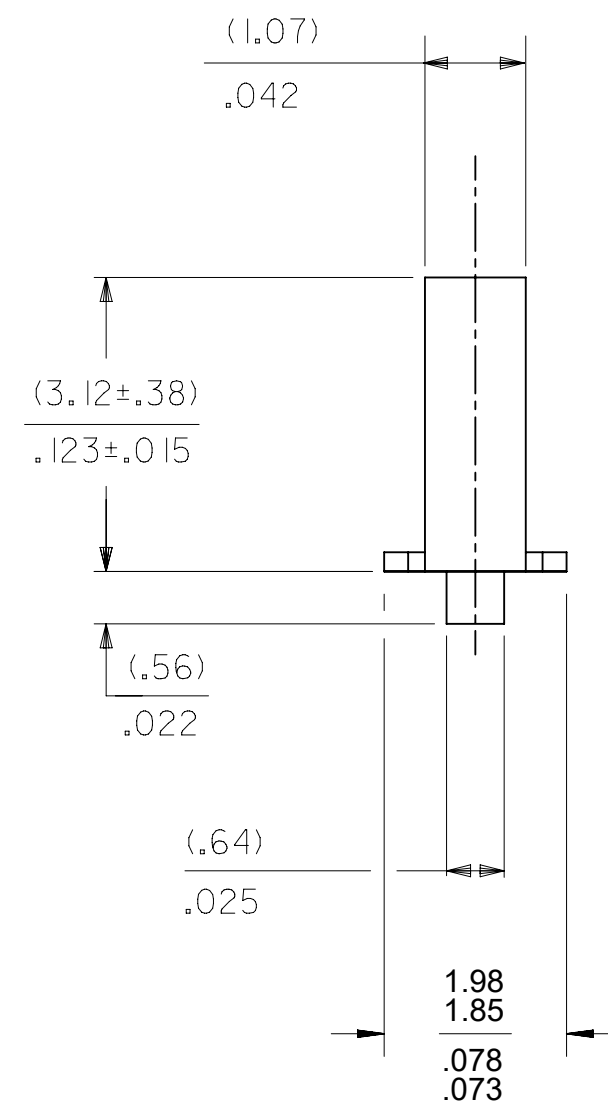
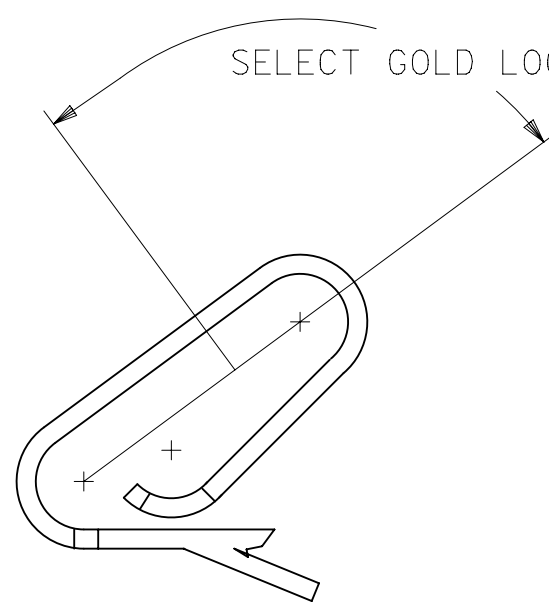
CARRIER VIEW



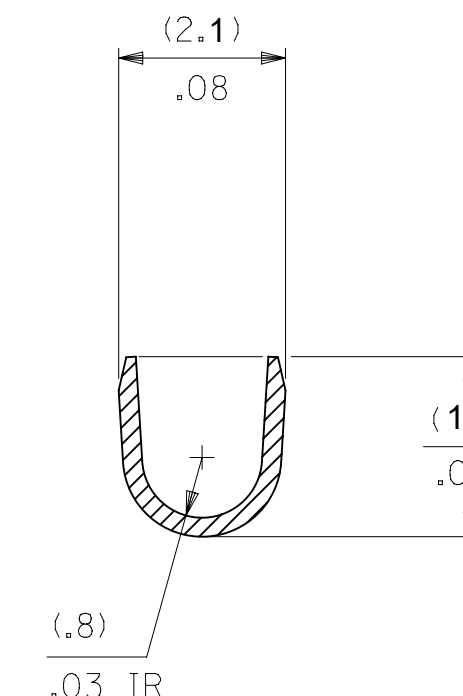
NOTES:

1. MATERIAL:  
(0.20)/.008 THICK BRASS
2. FINISH:  
122 - OVERALL TIN: (0.00381)/.000150 MIN. TIN OVER  
(0.00076)/.000030 MIN NICKEL  
154 - OVERALL TIN: (0.00254)/.000100 MIN. TIN OVER  
(0.00127)/.000050 MIN NICKEL  
P909 - OVERALL HOT TIN DIP: (0.00254)/.000100 MIN.  
550 - SELECT GOLD: (0.00038)/.000015 MIN.  
OVERALL GOLD FLASH: (0.00005)/.000002 MIN.  
OVERALL NICKEL UNDERPLATE: (0.00076)/.000030 MIN.  
555- SELECT GOLD (0.00038)/.000015 MIN.  
OVERALL NICKEL UNDERPLATE: (0.00076)/.000030  
558 - SELECT GOLD: (0.00076)/.000030 MIN.  
OVERALL GOLD FLASH: (0.00005)/.000002 MIN.  
OVERALL NICKEL UNDERPLATE: (0.00127)/.000050 MIN.
3. PRODUCT SPEC: PS-10-07
4. PACKAGING SPECIFICATION: LOOSE TERMINALS: PER PK-2759-001  
CHAIN FORM TERMINALS: PER PK-2759-002
5. CRIMP IS FOR 22-30 GA WIRE WITH (1.57)/.062 DIA INSULATION MAX.
6. INSERTION FORCE OF TERMINAL INTO (2.54)/.100 CENTERLINE CONNECTOR IS 2.5 LBS. MAX
7. TERMINAL RETENTION IN HOUSING IS 26.7N / 6LBS MIN. WHEN PULLED AT THE RATE OF (25.4MM) / 1 INCH PER MINUTE.
8. DIMENSIONS GIVEN ACROSS CENTERLINES ARE SYMMETRICAL ABOUT THOSE CENTERLINES WITHIN HALF THE TOTAL TOLERANCE.
9. THIS PART CONFORMS TO CLASS B REQUIREMENTS OF COSMETIC SPECIFICATION PS-45499-002.

SELECT GOLD LOCATION

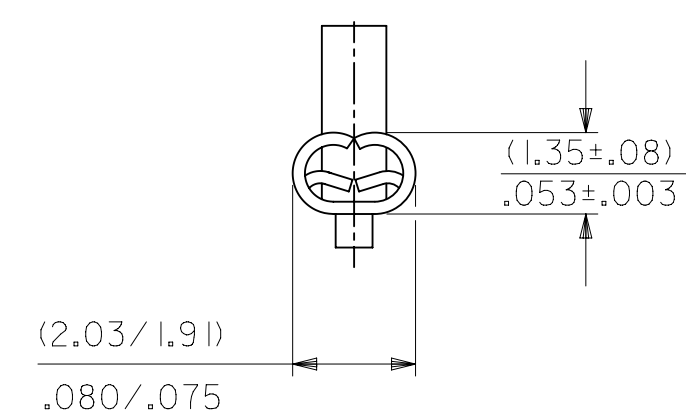


SECTION A-A  
BACKGROUND OMITTED



SECTION B-B  
BACKGROUND OMITTED

CRIMP DETAIL



CRIMPED TERMINAL 2759-(P909)C IS USED WITHOUT WIRE AND IS INSERTED INTO HOUSING TO PROVIDE TENSION WHEN ASSEMBLED TO HEADERS DURING SHIPMENT.

2759-(\*\*\*)\*

FORM

L=LOOSE

C=LOOSE CRIMPED

A=CHAIN, PER WINDING DETAIL "A"

B=CHAIN, PER WINDING DETAIL "B"

PLATING

SEE NOTE 2

THIS DRAWING CONTAINS INFORMATION THAT IS PROPRIETARY TO MOLEX ELECTRONIC TECHNOLOGIES, LLC AND SHOULD NOT BE USED WITHOUT WRITTEN PERMISSION

|  |   |                        |         |   |  |                          |  |
|--|---|------------------------|---------|---|--|--------------------------|--|
| DIMENSION UNITS<br><b>MM/IN</b>                            |   | SCALE<br><b>1:1</b>    |         | CURRENT REV DESC: OBSOLETE PART NUMBER<br>AS PER PCN#509451 |  | <b>molex</b>             |  |
| GENERAL TOLERANCES (UNLESS SPECIFIED)                      |   |                        |         | EC NO: 686785   |  |                          |  |
|  |   | MM                     | INCH    | DRWN: SUGEEB 2021/08/31                                     |  | PRODUCT CUSTOMER DRAWING |  |
| 4 PLACES   | ± |                        | ±       | CHK'D: GGA 2022/02/28                                       |  | DOCUMENT NUMBER          |  |
| 3 PLACES   | ± | 0.25                   | ± 0.014 | APPR: GGA 2022/02/28  |  | DOC TYPE                 |  |
| 2 PLACES   | ± | 0.25                   | ± 0.014 | INITIAL REVISION:   |  | DOC PART                 |  |
| 1 PLACE  | ± | 0.36                   | ±       | DRWN: SAMIEC 1987/07/28                                     |  | REVISION                 |  |
| 0 PLACES   | ± |                        | ±       | APPR: FSMITH 2012/03/20                                     |  | SD-2759                  |  |
| ANGULAR TOL  |   | ± 0.5 °                |         | DRAWING   |  | PSD                      |  |
| DRAFT WHERE APPLICABLE<br>MUST REMAIN<br>WITHIN DIMENSIONS |   | THIRD ANGLE PROJECTION |         | SERIES  |  | 001                      |  |
|  |   |                        |         | D-SIZE  |  | AW3                      |  |
|  |   |                        |         | 2759  |  | 1 OF 2                   |  |
|  |   |                        |         | SEE TABLE   |  | GENERAL MARKET           |  |
|  |   |                        |         |   |  |                          |  |

