



PRODUCT SPECIFICATION

[1] SCOPE

THIS PRODUCT SPECIFICATION COVERS THE GENERAL REQUIREMENTS FOR .187, .205,.250 SERIES

[2] PRODUCT DESCRIPTION

[2.1] PRODUCT NAME AND PART NUMBER

PRODUCT NAME	PART NUMBER	MATING TAB THK'
.187 SLIP-ON RECEPTACLE	35718-08*0	1.0 mm.
	35718-09*0 / 35703-0260(LEAD FREE)	0.5 mm
	35718-10*0 / 35703-0360(LEAD FREE)	0.8 mm
	35718-11*0	1.2 mm
	35718-15*0	0.5 mm
.205 SLIP-ON RECEPTACLE	35720-11*0	0.5 mm
	35720-12*0	0.5 mm
	35720-13*0	0.6 mm
	35720-16*0	0.8 mm
.250 SLIP-ON RECEPTACLE	35725-24*0 / 35706-0160(LEAD FREE)	0.8 mm
	35725-27*0	0.8 mm
	35725-43*0	0.8 mm

[2.2] MATERIALS, PLATING & DIMENSION

SEE THE APPROPRIATE DRAWINGS FOR INFORMATION ON MATERIALS, PLATINGS AND DIMENSIONS.

[2.3] APPLICABLE WIRES

PART NUMBER	WIRE RANGE	INSULATION DIA
35718-08*0	AWG #20-#16 (0.52-1.31)	3.1 mm MAX.
35718-09*0 / 35703-0260	AWG #20-#16 (0.52-1.31)	2.6 – 3.5 mm
35718-10*0 / 35703-0360	AWG #20-#16 (0.52-1.31)	2.6 – 3.5 mm
35718-11*0	AWG #22-#16 (0.33-1.31)	3.1 mm MAX.
35718-15*0	AWG #14-#10 (2.08-5.26)	4.4 – 5.3 mm
35720-11*0	AWG #24-#22 (0.20-0.33)	2.5 mm MAX.
35720-12*0	AWG #20-#16 (0.52-1.31)	3.1 mm MAX.
35720-13*0	AWG #20-#16 (0.52-1.31)	3.1 mm MAX.
35720-16*0	AWG #20-#16 (0.52-1.31)	3.1 mm MAX.
35725-24*0 / 35706-0160	AWG #18-#14 (0.82-2.08)	3.8 mm MAX.
35725-27*0	AWG #14-#10 (2.08-5.26)	3.8 – 5.3 mm
35725-43*0	AWG #22-#20 (0.33-0.52)	1.5 – 2.0 mm

REVISION: C1	ECR/ECN INFORMATION: KOR2005-0198 DATE: 2005/05/02	TITLE: .187/.205/.250 SLIP-ON RECEPTACLE TERMINAL	SHEET No. 1 of 3
DOCUMENT NUMBER: PS-35703-001	CREATED / REVISED BY: J.B.JIN	CHECKED BY: W.Y.YANG	APPROVED BY: C.W.LEE



PRODUCT SPECIFICATION

[3] PERFORMANCE SPECIFICATION

ITEM		CONDITION		REQUIREMENT		
3-1	TEMPERATURE - RISE	Mate the tab and receptacle terminal, and measure the contact temperature at the tes current load. * Test Current (AC)		Maximum temperature of the temperature over ambient of 30°C		
		Wire Size	Test Current			
		AWG # 22	2.5A			
		AWG # 20	4.0A			
		AWG # 18	7.0A			
		AWG # 16	10.0A			
		AWG # 14	13.0			
		AWG # 12	18.0A			
AWG # 10	25.0A					
3-2	HEAT CYCLE	Mate the tab and receptacle exposed for 500 cycles. *1 cycle : 45 minutes – on 15 minutes - off		* Temperature Rise : 85°C Max. * Electrical Resistance : Unit : mΩ (Max.)		
		Wire Size	Test Current	Wire Size	Contact Resistance	
					24 cycle	500 cycle
		AWG # 22	5.0A	AWG # 22	3.0	4.0
		AWG # 20	8.0A	AWG # 20	2.0	2.5
		AWG # 18	12.0A	AWG # 18	1.2	1.6
		AWG # 16	20.0A	AWG # 16	1.0	1.2
		AWG # 14	26.0A	AWG # 14	0.7	0.9
AWG # 12	36.0A	AWG # 12	0.6	0.7		
AWG # 10	45.0A	AWG # 10	0.5	0.6		
3-3	WIRE PULLOUT FORCE(AXIAL)	Apply an axial pullout force on a wire at a rate of 25±6mm per minute.		Wire Size	Pullout force	
				AWG # 22	3.9 kg.f Min.	
			6.1 kg.f Min.			
			8.5 kg.f Min.			
			13.3 kg.f Min.			
			19.4 kg.f Min.			
			29.6 kg.f Min.			
			35.0 kg.f Min.			

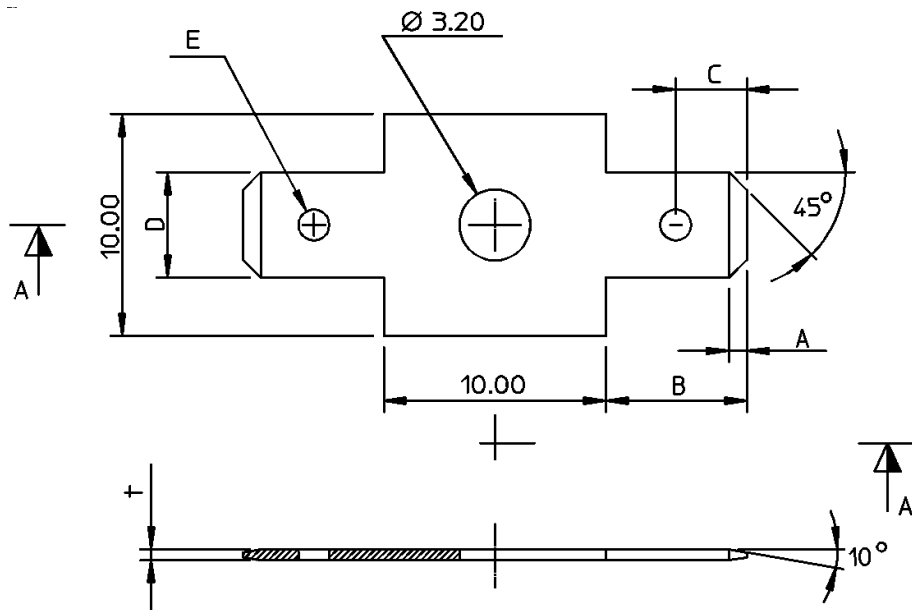
REVISION:	ECR/ECN INFORMATION:	TITLE:	SHEET No.
C1	EC No: KOR2005-0198 DATE: 2005/05/02	.187/.205/.250 SLIP-ON RECEPTACLE TERMINAL	2 of 3
DOCUMENT NUMBER:	CREATED / REVISED BY:	CHECKED BY:	APPROVED BY:
PS-35703-001	J.B.JIN	W.Y.YANG	C.W.LEE



PRODUCT SPECIFICATION

ITEM		CONDITION	REQUIREMENT		
3-4	INSERTION AND WITHDRAWAL FORCE	Apply an axial insertion force and withdrawal force on the terminal at a rate of 25 ± 6 mm per minute.	* Insertion force (Max.)		
				First	6th
			.187/.205	6.8 kg.f	---
			.250	7.8 kg.f	---
			* Withdrwal force (Min.)		
	First	6th			
.187/.205	1.3 kg.f	0.9 kg.f			
.250	1.8 kg.f	1.8 kg.f			
3-5	Salt Spray	Put the terminal into the chamber at $35 \pm 2^\circ\text{C}$ And spray 5% solution of NaCl for 3 cycle.	* Appearance : No. Damage		

[6] TEST TAB



Test Tab	A ± 0.15	B (Min.)	C ± 0.15	D ± 0.15	E ± 0.15
.110	0.5	7.11	1.57	2.79	1.25 Dia
.187	0.8	6.35	3.20	4.75	1.40 Dia
.205	0.8	6.35	3.20	5.20	1.60 Dia
.250	0.8	7.95	4.50	6.35	1.80 Dia

* Mating Tab Thickness : 0.5mm ----- 0.500 – 0.516
 0.8mm ----- 0.805 – 0.820
 1.0mm ----- 1.005 – 1.020
 1.2mm ----- 1.205 – 1.220

REVISION: C1	ECR/ECN INFORMATION: EC No: KOR2005-0198 DATE: 2005/05/02	TITLE: .187/.205/.250 SLIP-ON RECEPTACLE TERMINAL	SHEET No. 3 of 3
DOCUMENT NUMBER: PS-35703-001	CREATED / REVISED BY: J.B.JIN	CHECKED BY: W.Y.YANG	APPROVED BY: C.W.LEE